

Global Protect Installation & Configuration.

Step 1: Go to <https://sop.cput.ac.za> (A Screen below will appear)

Step 2: Login using your CPUT LAN Login Credentials ads\student Nr: (ads\200167530). Type your LAN Password. Click **Log In**.



The screenshot shows the Palo Alto Networks GlobalProtect Portal login interface. At the top left is the Palo Alto Networks logo, consisting of an orange diamond shape made of four smaller diamonds, followed by the word "paloalto" in a bold, lowercase sans-serif font, and "NETWORKS" in a smaller, uppercase sans-serif font below it. Below the logo, the text "GlobalProtect Portal" is centered. There are two input fields: the first contains the text "ads\studentnumber" and the second contains a series of seven dots representing a password. Below the password field is a blue rounded rectangular button with the text "LOG IN" in white, uppercase letters.

Step 3: The next screen will appear. To download select the correct version/platform. Once download is complete click the installation file to install.



GlobalProtect Portal

[Download Windows 32 bit GlobalProtect agent](#)

[Download Windows 64 bit GlobalProtect agent](#)

[Download Mac 32/64 bit GlobalProtect agent](#)

Windows 32 bit OS needs to download and install Windows 32 bit GlobalProtect agent.

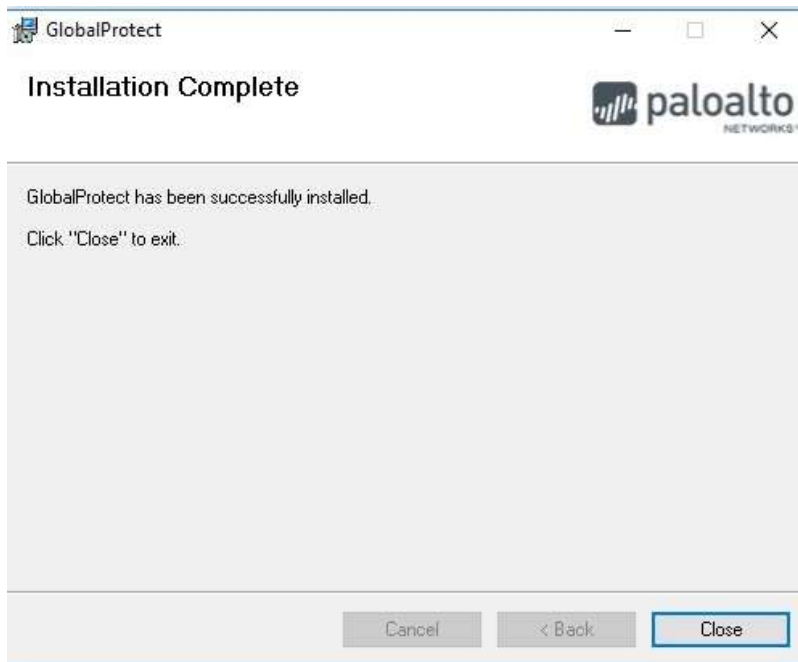
Windows 64 bit OS needs to download and install Windows 64 bit GlobalProtect agent.

Mac OS needs to download and install Mac 32/64 bit GlobalProtect agent.

Step 4: Accept all the defaults and click “**Next**” on all the screens that will appear.



Step 5: When you get to the screen as seen below, click ‘**Close**’ and the installation is complete.



Step 6. The below screen will appear on the bottom right of your screen, enter the 'Portal Address' as seen: "sop.cput.ac.za" and click "connect"



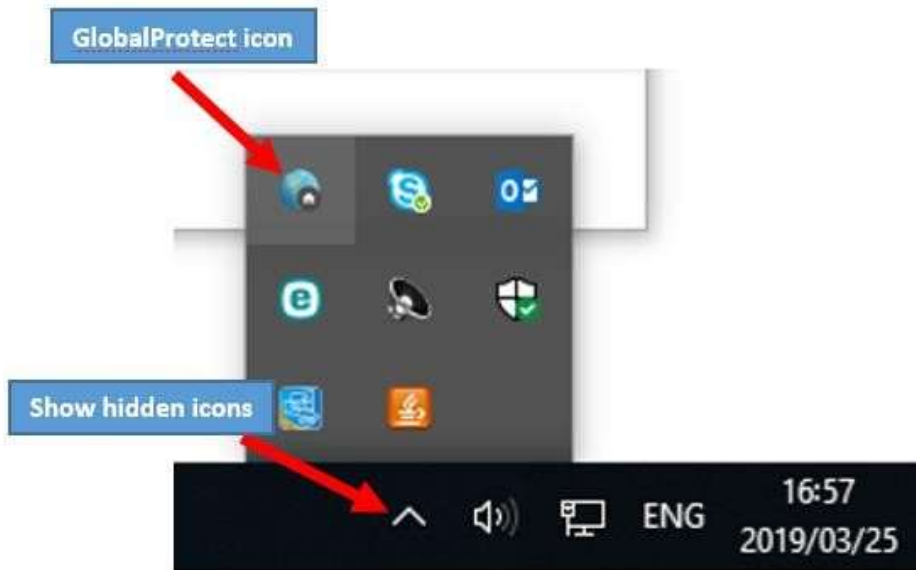
Step 7: You will be prompted to authenticate using your CPUT Login Credentials ads\student Nr: (ads\200167530) and password and select 'Sign In'

If screen in **step 6** did not appear automatically or it disappeared after installation was completed, find the same screen as displayed below.



Step 6 Option 2:

On the bottom right of your screen, select the 'show hidden icon' button and click on "GlobalProtect" icon as displayed below.



You will now be able to access CPUT network as well as have access to the CPUT resources from outside.

